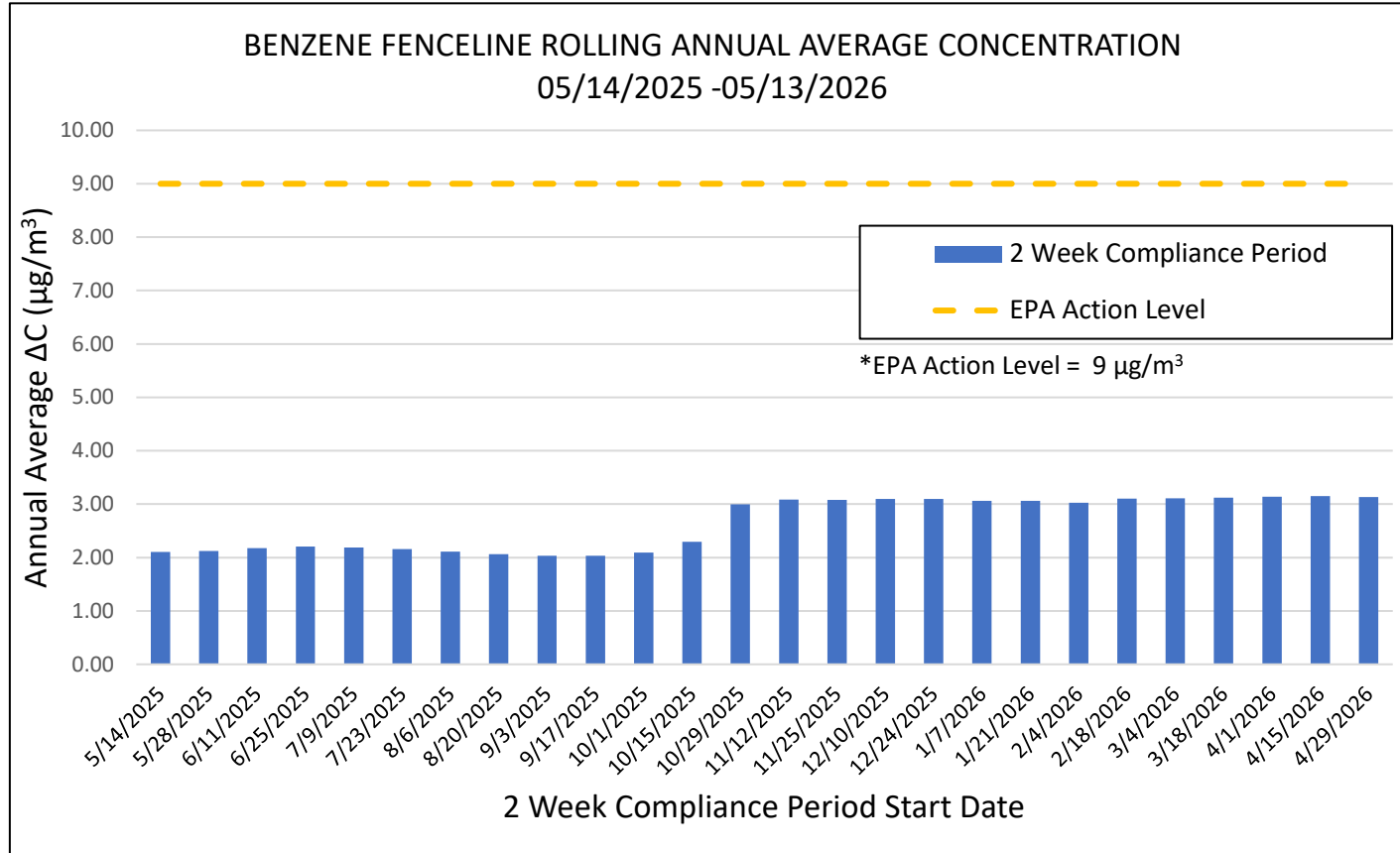
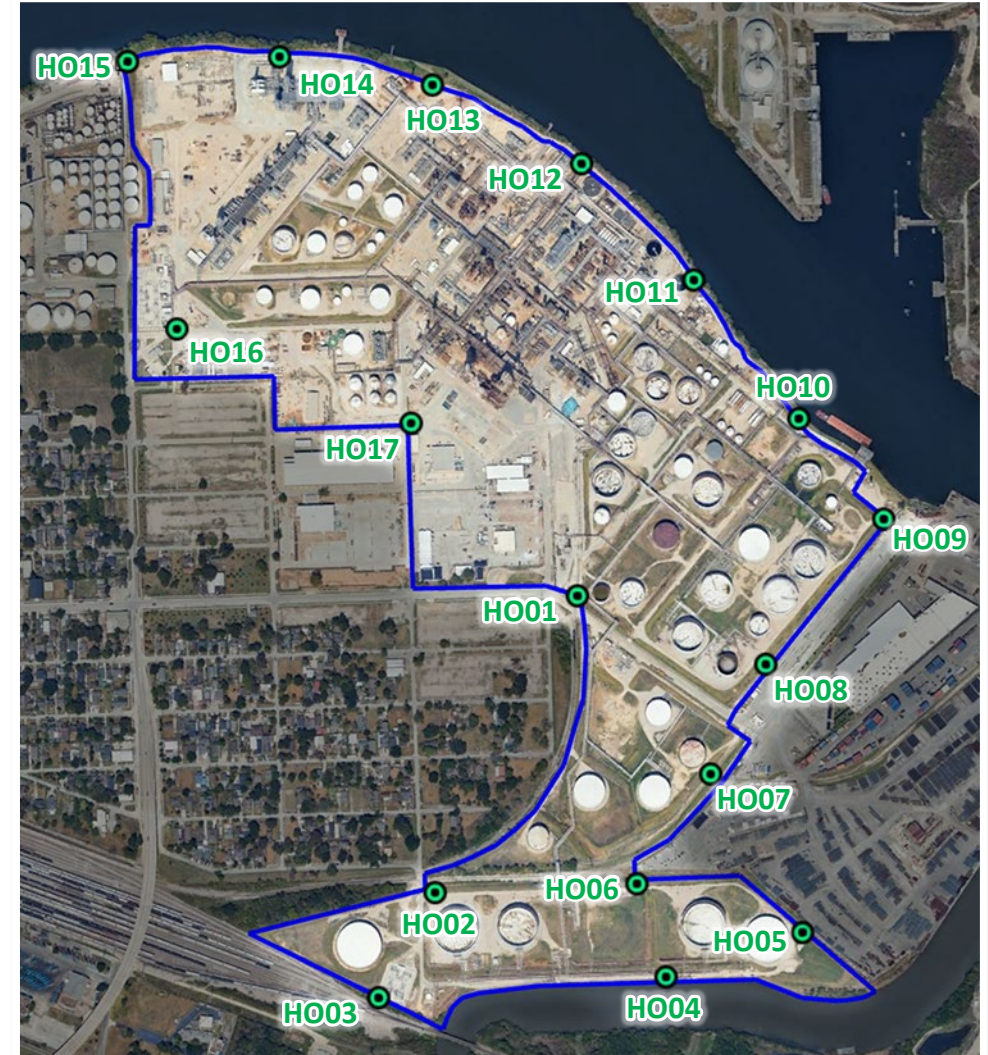


Benzene Fenceline Monitoring



Annual Rolling Average ΔC as of 05/13/2026	3.13 $\mu\text{g}/\text{m}^3$
--	---



* The EPA action level is not a regulatory limit or a health-based level of exposure, instead it serves as an action level to conduct further investigation.

Houston Benzene Concentrations (µg/m3) at Sampling Locations

Sampling Location	Compliance Event 191	Compliance Event 192	Compliance Event 193	Compliance Event 194	Compliance Event 195	Compliance Event 196	Compliance Event 197	Compliance Event 198	Compliance Event 199	Compliance Event 200	Compliance Event 201	Compliance Event 202	Compliance Event 203	Compliance Event 204	Compliance Event 205	Compliance Event 206	Compliance Event 207	Compliance Event 208	Compliance Event 209	Compliance Event 210	Compliance Event 211	Compliance Event 212	Compliance Event 213	Compliance Event 214	Compliance Event 215	Compliance Event 216
	5/14/2025	5/28/2025	6/11/2025	6/25/2025	7/9/2025	7/23/2025	8/6/2025	8/20/2025	9/3/2025	9/17/2025	10/1/2025	10/15/2025	10/29/2025	11/12/2025	11/25/2025	12/10/2025	12/24/2025	1/7/2026	1/21/2026	2/4/2026	2/18/2026	3/4/2026	3/18/2026	4/1/2026	4/15/2026	4/29/2026
	µg/m ³	µg/m ³	µg/m ³	µg/m ³	µg/m ³	µg/m ³	µg/m ³	µg/m ³	µg/m ³	µg/m ³	µg/m ³	µg/m ³	µg/m ³	µg/m ³	µg/m ³	µg/m ³	µg/m ³	µg/m ³	µg/m ³	µg/m ³	µg/m ³	µg/m ³	µg/m ³	µg/m ³	µg/m ³	µg/m ³
HO1	1.63	1.63	1.90	1.81	1.29	1.36	1.57	2.00	2.19	2.45	3.58	2.65	2.63	1.43	2.69	2.02	1.54	1.24	2.45	1.58	1.80	1.51	1.14	1.52	2.26	1.80
HO2	1.64	1.60	1.78	1.47	0.94	1.31	1.56	1.77	2.01	2.13	2.51	2.35	3.37	1.31	2.07	1.87	1.16	1.24	1.56	1.36	1.54	1.45	1.21	1.78	1.53	1.60
HO3	0.78	1.12	1.04	0.94	0.73	1.53	1.17	1.63	1.76	1.75	2.55	1.62	21.20	0.86	1.81	1.42	0.94	0.99	1.31	0.98	1.11	0.76	0.65	0.86	0.85	1.31
HO4	1.27	1.65	1.41	1.39	0.85	1.21	1.67	2.16	2.46	2.77	3.62	2.73	3.13	0.83	2.32	1.59	1.12	1.41	1.86	1.26	1.63	1.26	0.79	1.58	1.12	1.69
HO5	1.01	1.58	1.53	1.63	1.53	2.04	2.18	2.45	2.26	2.41	2.49	1.95	2.69	0.89	1.62	1.39	1.49	1.60	1.48	1.84	1.44	1.07	1.05	0.65	0.95	1.40
HO6	1.80	1.94	1.97	1.74	0.85	1.42	1.79	2.41	2.46	2.52	2.76	3.01	2.91	1.45	2.28	1.85	1.51	1.87	1.97	1.67	1.99	2.07	0.95	2.06	1.31	1.75
HO7	1.45	1.69	1.82	1.76	1.65	2.02	2.08	2.30	2.33	2.66	2.81	2.32	3.23	1.23	2.35	1.94	1.56	1.84	1.93	1.91	1.83	1.99	1.30	1.15	1.57	1.92
HO8	1.28	1.70	1.79	1.75	1.60	1.93	1.75	1.98	2.09	2.42	2.48	2.38	3.58	1.06	2.56	1.66	2.16	2.35	2.69	2.05	1.79	1.93	1.00	0.84	1.06	1.75
HO9	0.98	1.44	1.24	1.28	1.09	1.77	1.73	1.97	1.79	1.92	3.18	2.17	2.05	0.95	1.96	1.53	1.27	1.41	1.37	1.66	1.09	0.84	0.74	0.63	1.05	1.10
HO10	3.20	3.17	2.95	4.79	3.85	2.73	2.12	2.31	2.46	2.58	4.26	2.43	3.34	2.39	2.23	2.40	3.05	2.41	2.19	2.62	2.78	2.60	2.53	1.38	2.75	1.76
HO11	1.98	1.85	2.07	2.06	2.16	1.57	1.49	1.57	1.66	1.87	1.81	2.08	2.26	1.73	1.46	1.72	1.62	1.72	1.62	1.80	2.19	1.72	1.78	1.50	2.01	1.35
HO12	3.77	2.60	4.65	2.91	3.14	2.07	2.44	1.94	2.32	1.83	2.60	8.25	3.99	2.86	1.81	3.42	2.42	2.02	1.61	2.42	5.06	2.80	2.70	2.78	3.00	1.47
HO13	2.01	1.67	2.20	1.83	1.79	1.43	1.65	1.53	1.76	1.77	2.35	2.23	2.72	4.72	1.67	2.29	1.76	1.42	1.54	1.43	2.38	1.76	1.62	1.51	1.51	1.18
HO14	3.33	1.24	1.28	1.01	0.63	0.88	1.09	1.35	1.37	1.51	1.86	1.69	1.43	1.66	1.28	1.18	0.95	1.08	1.06	1.41	1.91	1.05	0.82	1.13	0.90	0.79
HO15	1.01	1.81	1.86	0.93	1.02	1.08	0.97	1.33	1.40	1.76	1.44	1.40	1.40	1.05	1.09	1.24	1.34	0.99	1.04	1.11	1.08	0.84	0.73	0.59	0.73	0.79
HO16	0.85	1.02	1.02	1.03	0.64	0.92	1.00	1.31	1.48	1.69	5.05	1.77	1.56	0.94	1.42	1.28	0.87	1.12	1.22	1.11	0.97	0.71	0.60	0.84	0.90	0.82
HO17	1.21	1.42	1.45	1.36	0.84	1.19	1.33	1.72	1.80	1.70	2.19	2.18	2.15	1.17	1.75	1.57	1.04	1.22	1.66	1.55	1.37	1.02	0.96	1.20	1.29	1.26
MAX	3.77	3.17	4.65	4.79	3.85	2.73	2.44	2.45	2.46	2.77	5.05	8.25	21.20	4.72	2.69	3.42	3.05	2.41	2.69	2.62	5.06	2.80	2.70	2.78	3.00	1.92
MIN	0.78	1.02	1.02	0.93	0.63	0.88	0.97	1.31	1.37	1.51	1.44	1.40	1.40	0.83	1.09	1.18	0.87	0.99	1.04	0.98	0.97	0.71	0.60	0.59	0.73	0.79
DELTA	2.99	2.15	3.63	3.86	3.22	1.85	1.47	1.14	1.09	1.26	3.61	6.85	19.80	3.89	1.60	2.24	2.18	1.42	1.65	1.64	4.09	2.09	2.10	2.19	2.77	1.13
AVG DELTA	2.10	2.12	2.18	2.21	2.19	2.16	2.11	2.06	2.03	2.03	2.09	2.29	2.99	3.09	3.08	3.09	3.10	3.06	3.06	3.03	3.10	3.11	3.12	3.14	3.15	3.13